



Make an ImpaCT
BY SERVING YOUR STATE

State of Connecticut

The State of Connecticut Executive Branch

The State of Connecticut – Executive Branch employs thousands of dedicated professionals, committed to providing a safe and thriving environment for our community, and visitors. As a small state, we have so much to offer – education, employment, culture, travel, nature, history and recreation - each of these opportunities positively impact our citizens and businesses.

While Hartford is Connecticut's state capital and home to many of our agency offices, we are proud to offer positions located throughout the state. Some of our most popular work sites are located in Bridgeport, Enfield, Middletown, New Haven, Torrington, and with a higher demand throughout the Fairfield County.

We are seeking to hire employees for locations statewide who find inspiration in our culture and values, specifically:

- Committed to making an impact.
- Serving the public through meaningful work.
- Seeking limitless opportunities to grow.
- Enjoy a work/life balance (with competitive benefits).
- Interested in diversity and fresh perspectives

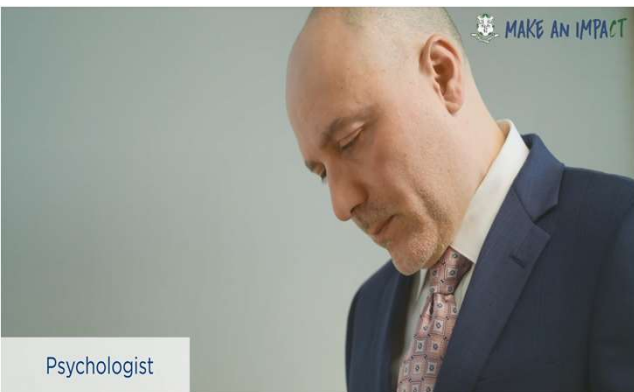
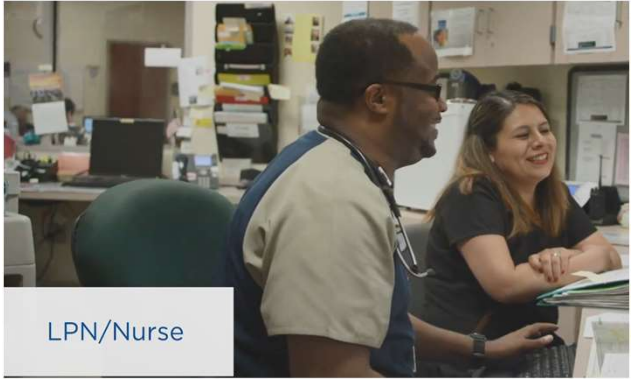
If you can see yourself contributing to our vision, we encourage you to apply to join us and #MakeAnImpaCT! View our open positions and apply via the State of Connecticut Online Employment Center: <https://www.jobapscloud.com/ct>.



Make an Impact

BY SERVING YOUR STATE

- Limitless Opportunities
- Hiring for Diversity & Fresh Perspectives
- Meaningful Work
- Work Life Balance



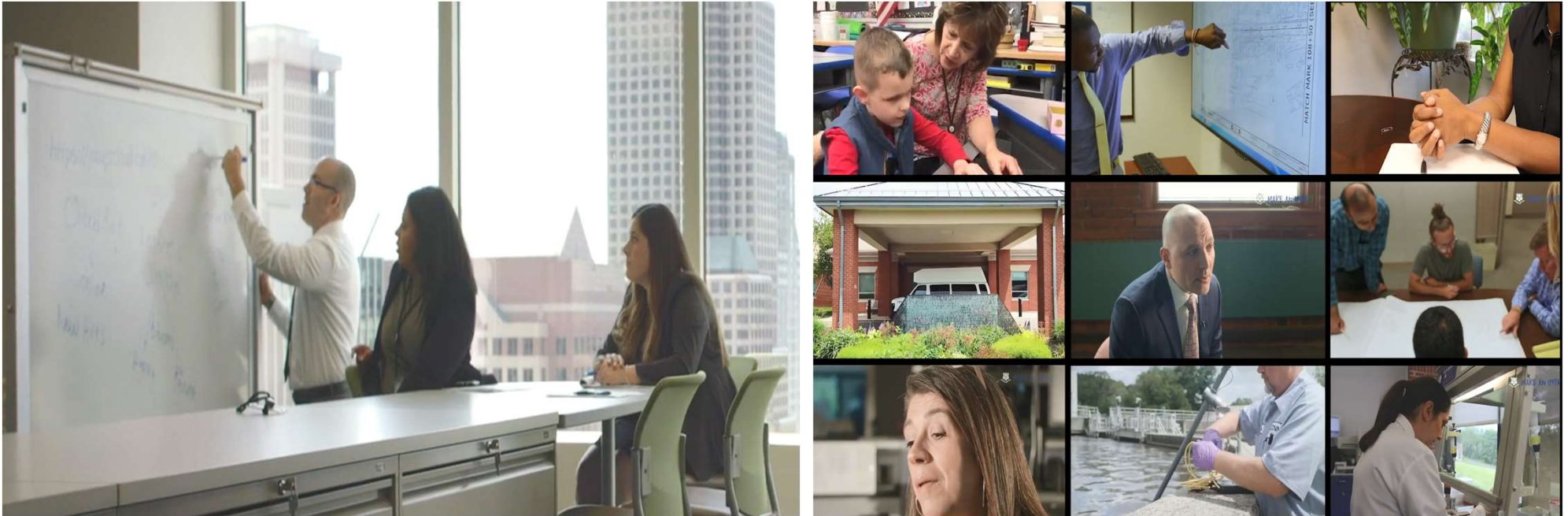
Limitless Opportunities

As the largest and most diversified employer in Connecticut, employees can do almost anything working with the State of Connecticut. Operating in a large range of industries—from biochemistry to information technology, engineering, to law enforcement, nursing, to social work—it's easy for prospective employees to find a career path that resonates with them.



Hiring For Diversity & Fresh Perspectives

The State of Connecticut recognizes and values the business case for diversity—how diverse workplaces better represents its citizenry, increases viewpoints and experiences, and improves service delivery. As long as employees want to make a positive contribution, they will be able to find a role suited to them at the State of Connecticut.



Meaningful Work

Serving the public is an important and rewarding profession, and employees are passionate about helping advance Connecticut into the future. Every single day is an opportunity to positively impact the lives of Connecticut citizens and gain experience in their respective fields, and the state's team-based approach allows employees to have a 360 degree view of their individual role and the impact they're making.



We Encourage Work Life Balance

No matter how you #ServeYourState, Connecticut has something for everyone to enjoy during personal time. Whether it's hiking through our State Parks, strolling through our downtown storefronts or taking in the views of our beautiful coastline, CT is the place to be! [Visit CT - Official Connecticut Office of Tourism](#)

This is why Work-Life balance is a key component in our statewide culture. In addition to our generous benefits package, our employees enjoy limitless opportunities, diverse atmospheres, and meaningful work with fresh perspectives.

The State of Connecticut offers top-tier traditional benefits, including dental, health, and vision. In addition, we offer one of the most competitive retirement packages amongst other state employers. Hazardous Duty employees qualify for full pension and health benefits after 25 years of service. [Employee Benefits Handbook Benefits Overview \(Care Compass\)](#)

In addition, our employees can access:

- Dependent Care Programs.
- Employee Assistance Programs.
- Federal Loan Forgiveness.
- Flexible Spending Accounts.
- Qualified Transportation Accounts

EXPLORE OUR BENEFITS

<p>STATE MEDICAL AND DENTAL BENEFITS</p>  <p>HYBRID RETIREMENT PLANS</p> 		<p>PUBLIC SERVICE LOAN FORGIVENESS</p>  <p>PAID TIME OFF</p> 
---	---	---