

Senior Planner

Placer County Conservation Program

Auburn, CA

\$44.91 - \$56.09/hour, \$93,412.80 - \$116,667.20/year

4.0% general wage increase July 2024

[Click here for benefits package information](#)

THE POSITION

This position is responsible for the coordination and review of public infrastructure and land use entitlement applications for consistency with Program requirements in cooperation with the County and City of Lincoln. Examples of duties include:

- Supporting, collaborating, and developing state, federal, and non-profit grant proposals to fund Program related land acquisitions, scientific studies, and habitat restoration projects.
- Monitoring and reporting on grant funding implementation.
- Using geo-spatial technology to analyze land use conditions in conjunction with County staff and outside local agencies.
- Preparing budgets and assisting in budget implementation, forecasts, and staffing.
- Providing equipment and supplies/materials administration.

THE IDEAL CANDIDATE

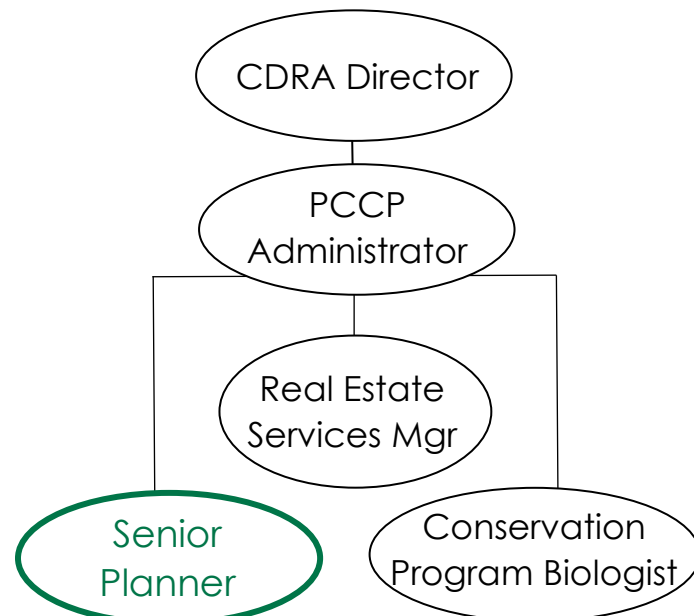
The ideal candidate will demonstrate strong land use development skills and will understand the principles and application of state and federal laws and regulations covering land use, endangered species, wetlands, and water quality.

THE TEAM

The Placer County Conservation Program (PCCP) is designed to ensure that land will be managed to continue to support the survival and well being of the covered species, as well as the survival of hundreds of other species that are dependent on the same habitat. By proactively addressing the long-term conservation and development needs of the County, the PCCP will strengthen local control over land use and provides greater flexibility in meeting the County's social and economic needs for the future.

The PCCP covers approximately 201,000 acres of Western Placer County. Within the PCCP plan area, 50,000 to 60,000 acres within the available potential acquisition area would become part of a reserve system. This conservation reserve system would preserve many acres of vernal pool habitat (approximately 50% of the County's remaining stock of these fragile, seasonal ecosystems). This acreage occurs in the unincorporated County and City of Lincoln areas.

PCCP Team





Minimum Qualifications:

- 3 years of increasingly responsible planning experience performing duties similar to Placer County's Associate Planner.
- Equivalent to a bachelor's degree with major course work in urban planning, regional planning, environmental planning, or a closely related field.

EMPLOYER OF CHOICE & QUALITY OF LIFE

Placer County is an extraordinary community consistently ranked first for its quality of life. Placer is characterized by a healthy and diverse economy, attractive business environment, and residents who benefit from high quality educational, safety, and healthcare infrastructure. Placer is home to a wide variety of outstanding recreational opportunities and scenic open spaces, including nature's crown jewel of the Sierra, Lake Tahoe. From hiking and biking to horseback riding, rafting on rivers, snowshoeing, skiing, and visiting the Wine and Ale Trail, Placer County offers something for everyone to enjoy.

